



576357553

DIAMOND REPORT **ELECTRONIC COPY**



April 25, 2023
IGI Report Number 576357553
Description NATURAL DIAMOND
Shape and Cutting Style ROUND BRILLIANT
Measurements 6.72 - 6.77 x 4.22 mm

GRADING RESULTS

Carat Weight 1.20 CARAT
Color Grade G
Clarity Grade VS 1
Cut Grade EXCELLENT

April 25, 2023
IGI Report Number 576357553
Description NATURAL DIAMOND
Shape and Cutting Style ROUND BRILLIANT
Measurements 6.72 - 6.77 x 4.22 mm

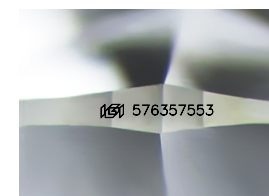
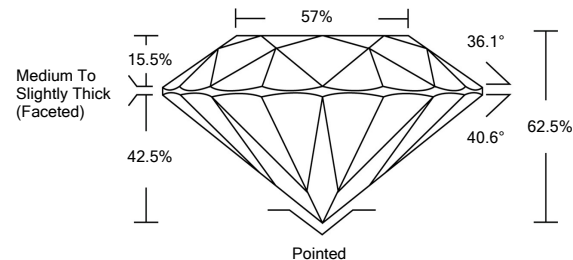
GRADING RESULTS

Carat Weight 1.20 CARAT
Color Grade G
Clarity Grade VS 1
Cut Grade EXCELLENT

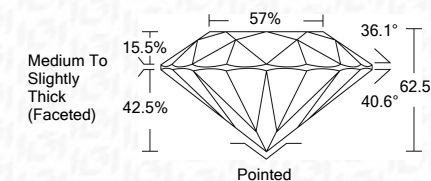
ADDITIONAL GRADING INFORMATION

Polish EXCELLENT
Symmetry EXCELLENT
Fluorescence NONE
Inscription(s) IGI 576357553
Comments: IDEAL CUT ROUND BRILLIANT

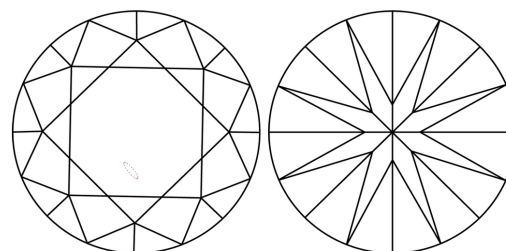
PROPORTIONS



Sample Image Used



CLARITY CHARACTERISTICS



KEY TO SYMBOLS

Red symbols indicate internal characteristics.
Green symbols indicate external characteristics.

COLOR

D - F	G - J	K - M	N - R	S - Z	FANCY
Colorless	Near Colorless	Slightly Tinted	Very Light Color	Light Color	

CLARITY

IF	VVS ¹⁻²	VS ¹⁻²	SI ¹⁻²	I ¹⁻³
Internally Flawless	Very Very Slightly Included	Very Slightly Included	Slightly Included	Included

ADDITIONAL GRADING INFORMATION

Polish EXCELLENT
Symmetry EXCELLENT
Fluorescence NONE
Inscription(s) IGI 576357553
Comments: IDEAL CUT ROUND BRILLIANT



IGI

April 25, 2023
IGI Report No 576357553
NATURAL DIAMOND
ROUND BRILLIANT
6.72 - 6.77 x 4.22 mm
Carat Weight 1.20 CARAT
Color Grade G
Clarity Grade VS 1
Cut Grade EXCELLENT
Depth 62.5%
Table 57%
Girdle Medium To Slightly Thick (Faceted)
Culet Pointed
Polish EXCELLENT
Symmetry EXCELLENT
Fluorescence NONE
Inscription(s) IGI 576357553
Comments: IDEAL CUT ROUND BRILLIANT