



595369543

DIAMOND REPORT **ELECTRONIC COPY**



October 24, 2023
IGI Report Number 595369543
Description NATURAL DIAMOND
Shape and Cutting Style ROUND BRILLIANT
Measurements 6.56 - 6.58 x 3.82 mm

GRADING RESULTS

Carat Weight 1.00 CARAT
Color Grade G
Clarity Grade VVS 2
Cut Grade EXCELLENT

October 24, 2023
IGI Report Number 595369543
Description NATURAL DIAMOND
Shape and Cutting Style ROUND BRILLIANT
Measurements 6.56 - 6.58 x 3.82 mm

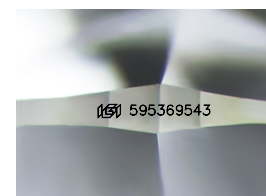
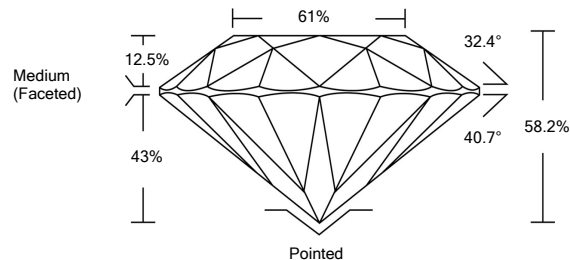
GRADING RESULTS

Carat Weight 1.00 CARAT
Color Grade G
Clarity Grade VVS 2
Cut Grade EXCELLENT

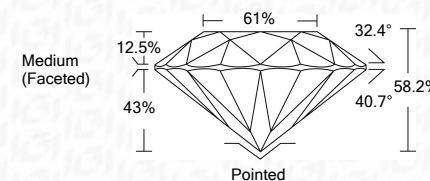
ADDITIONAL GRADING INFORMATION

Polish EXCELLENT
Symmetry EXCELLENT
Fluorescence VERY SLIGHT
Inscription(s) 595369543

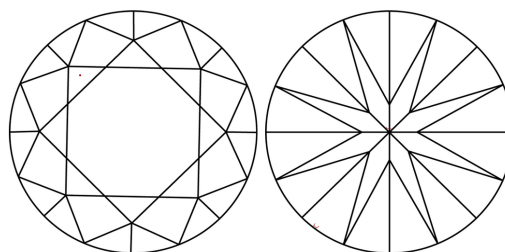
PROPORTIONS



Sample Image Used



CLARITY CHARACTERISTICS



KEY TO SYMBOLS

Red symbols indicate internal characteristics.
Green symbols indicate external characteristics.

COLOR

D - F	G - J	K - M	N - R	S - Z	FANCY
Colorless	Near Colorless	Slightly Tinted	Very Light Color	Light Color	

CLARITY

IF	VVS ¹⁻²	VS ¹⁻²	SI ¹⁻²	I ¹⁻³
Internally Flawless	Very Very Slightly Included	Very Slightly Included	Slightly Included	Included

ADDITIONAL GRADING INFORMATION

Polish EXCELLENT
Symmetry EXCELLENT
Fluorescence VERY SLIGHT
Inscription(s) 595369543



IGI

October 24, 2023
IGI Report No 595369543
NATURAL DIAMOND
ROUND BRILLIANT
6.56 - 6.58 x 3.82 mm
Carat Weight 1.00 CARAT
Color Grade G
Clarity Grade VVS 2
Cut Grade EXCELLENT
Depth 58.2%
Table 61%
Girdle Medium (Faceted)
Culet Pointed
Polish EXCELLENT
Symmetry EXCELLENT
Fluorescence VERY SLIGHT
Inscription(s) 595369543